

RoHS Consolidated Test Report

SAMPLE INFORMATION:

Sample Description : **LED Grow Light**
Trademark : **SINJIAlight**
Model Number : **ZW0173**
ZW0081,ZW0141,ZW0013,ZW0125,ZW0209,ZW0213,ZW0148
Manufacturer : **Shenzhen xinjia lighting co., ltd**
Manufacturer Address : **9th Floor, Building A9, Xinghuaxiong Industrial Park, Baihuadong
First Industrial Zone, Guangming District, Shenzhen, Guangdong**

CLIENT INFORMATION:

Applicant : **Shenzhen xinjia lighting co., ltd**
Applicant Address : **9th Floor, Building A9, Xinghuaxiong Industrial Park, Baihuadong
First Industrial Zone, Guangming District, Shenzhen, Guangdong**
Test Standard : **IEC62321-1: 2013**
Comment : **Selected test (s) in the selected parts as requested by client with
the RoHS 2 Directive 2011/65/EU Annex II (EU) 2015/863 as last
amended by Directive (EU) 2017/2102.**
Issue Date : **Mar. 25.2019**

REMARKS:

1. The test data obtained and the report issued by laboratories other than LST are provided by the applicant to us for data consolidation purposes. The report shall not be reproduced in part without written approval of us.
2. Characterization & Condition of sample: Normal.
3. The test results in the report only apply to the tested sample.

Approved by: _____

Date: Mar. 25.2019

RoHS Consolidated Test Report

Test Content:

Test Item(s)	Test Method	Reference	Unit	Limit	MDL
Cadmium(Cd)	IEC 62321-5:2013	ICP-OES	mg/kg	100	2
Lead(Pb)	IEC 62321-5:2013	ICP-OES	mg/kg	1000	2
Mercury(Hg)	IEC 62321-4:2013+AMD1:2017	ICP-OES	mg/kg	1000	2
Hexavalent Chromium(CrVI) (Metal)	IEC 62321-7-1:2015	UV-Vis	μg/cm ²	0.13	0.1
Hexavalent Chromium(CrVI) (Nonmetal)	IEC 62321-7-2:2017	UV-Vis	mg/kg	1000	8
PBBs (Next form)	IEC 62321-6:2015	GC-MS	mg/kg	1000	5
PBDEs (Next form)	IEC 62321-6:2015	GC-MS	mg/kg	1000	5
Dibutyl Phthalate(DBP)	IEC 62321-8:2017	GC-MS	mg/kg	1000	30
Butyl benzyl phthalate (BBP)	IEC 62321-8:2017	GC-MS	mg/kg	1000	30
Di-(2-ethylhexyl) Phthalate(DEHP)	IEC 62321-8:2017	GC-MS	mg/kg	1000	30
Diisobutyl phthalate (DIBP)	IEC 62321-8:2017	GC-MS	mg/kg	1000	30

PBBs		PBDEs	
Monobromobiphenyl	Hexabromobiphenyl	Monobromodiphenyl ether	Hexabromodiphenyl ether
Dibromobiphenyl	Heptabromobiphenyl	Dibromodiphenyl ether	Heptabromodiphenyl ether
Tribromobiphenyl	Octabromobiphenyl	Tribromodiphenyl ether	Octabromodiphenyl ether
Tetrabromobiphenyl	Nonabromobiphenyl	Tetrabromodiphenyl ether	Nonabromodiphenyl ether
Pentabromobiphenyl	Decabromobiphenyl	Pentabromodiphenyl ether	Decabromodiphenyl ether

RoHS Consolidated Test Report

Sample Description:

No.	Description	Name
1	Metal	Aluminum case
2	LED	LED
3	Plastic	Black Plastic
4	PCB	PCB
5	Metal	Internal Wiring
6	Rubber	Red Rubber
7	Soldering tin	Soldering tin
8	Inductance	Inductance
9	Resistance	Resistance
10	Capacitance	Capacitance

RoHS Consolidated Test Report

Test Results:

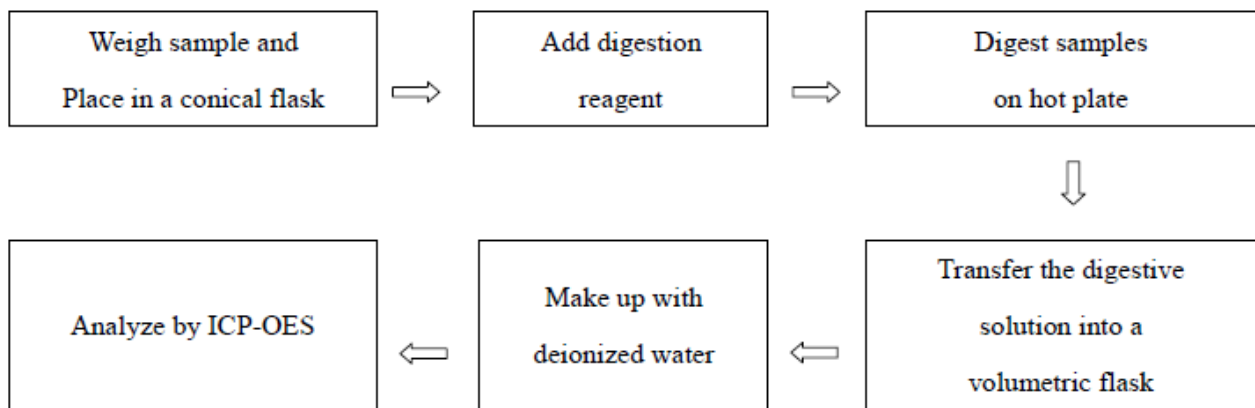
Test Item(s)	No.1	No.2	No.3	No.4	No.5
Cadmium (Cd)	N.D.	N.D.	N.D.	N.D.	N.D.
Lead (Pb)	N.D.	N.D.	N.D.	N.D.	N.D.
Mercury (Hg)	N.D.	N.D.	N.D.	N.D.	N.D.
Hexavalent Chromium (CrVI)	N.D.	N.D.	N.D.	N.D.	N.D.
PBBs	N.D.	N.D.	N.D.	N.D.	N.D.
PBDEs	N.D.	N.D.	N.D.	N.D.	N.D.
Dibutyl Phthalate (DBP)	N.D.	N.D.	N.D.	N.D.	N.D.
Butyl benzyl phthalate (BBP)	N.D.	N.D.	N.D.	N.D.	N.D.
Di-(2-ethylhexyl) Phthalate(DEHP)	N.D.	N.D.	N.D.	N.D.	N.D.
Diisobutyl phthalate (DIBP)	N.D.	N.D.	N.D.	N.D.	N.D.
Test Item(s)	No.6	No.7	No.8	No.9	No.10
Cadmium (Cd)	N.D.	N.D.	N.D.	N.D.	N.D.
Lead (Pb)	N.D.	N.D.	N.D.	N.D.	N.D.
Mercury (Hg)	N.D.	N.D.	N.D.	N.D.	N.D.
Hexavalent Chromium (CrVI)	N.D.	N.D.	N.D.	N.D.	N.D.
PBBs	N.D.	N.D.	N.D.	N.D.	N.D.
PBDEs	N.D.	N.D.	N.D.	N.D.	N.D.
Dibutyl Phthalate (DBP)	N.D.	N.D.	N.D.	N.D.	N.D.
Butyl benzyl phthalate (BBP)	N.D.	N.D.	N.D.	N.D.	N.D.
Di-(2-ethylhexyl) Phthalate(DEHP)	N.D.	N.D.	N.D.	N.D.	N.D.
Diisobutyl phthalate (DIBP)	N.D.	N.D.	N.D.	N.D.	N.D.

RoHS Consolidated Test Report

- Note:**
1. mg/kg= ppm
 2. N.D.= Not Detected(<MDL)
 3. MDL = Method Detection Limit
 4. -- = No Testing
 5. when Cr(VI) in a sample is detected below the 0.10 $\mu\text{g}/\text{cm}^2$ LOQ (limit of quantification), the sample is considered to be negative for Cr(VI). Since Cr(VI) may not be uniformly distributed in the coating even within the same sample batch, a "grey zone" between 0.10 $\mu\text{g}/\text{cm}^2$ and 0.13 $\mu\text{g}/\text{cm}^2$ has been established as "inconclusive" to reduce inconsistent results due to unavoidable coating variations. In this case, additional testing may be necessary to confirm the presence of Cr(VI). When Cr(VI) is detected above 0.13 $\mu\text{g}/\text{cm}^2$, the sample is considered to be positive for the presence of Cr(VI) in the coating layer. unavoidable coating variations may influence the determination Information on storage conditions and production date of the tested sample is unavailable and thus Cr(VI) results represent status of the sample at the time of testing.

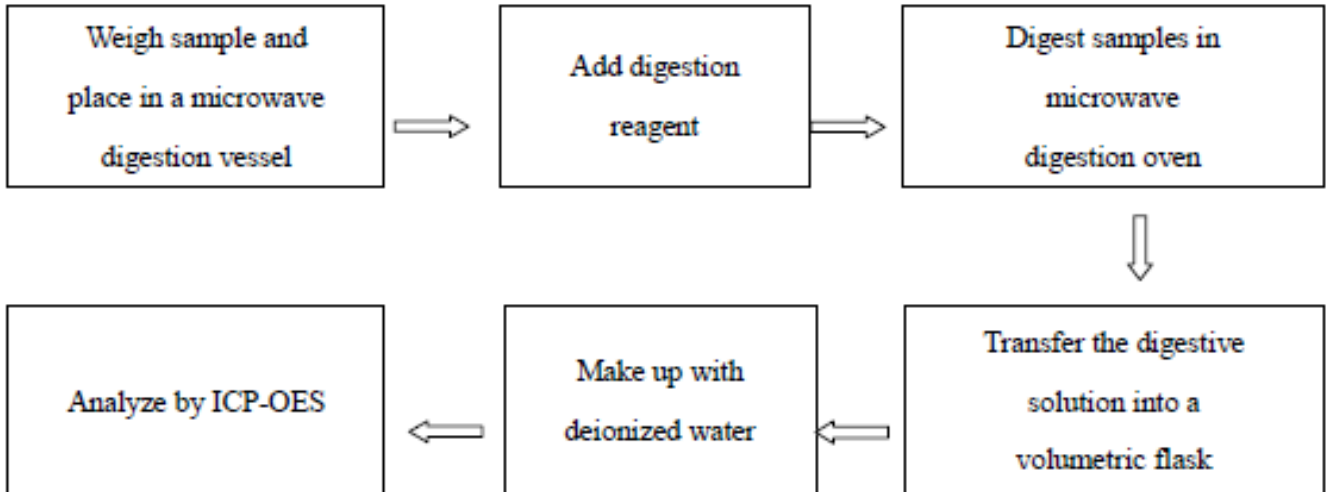
Test Process:

1. Test for Cd/Pb Content



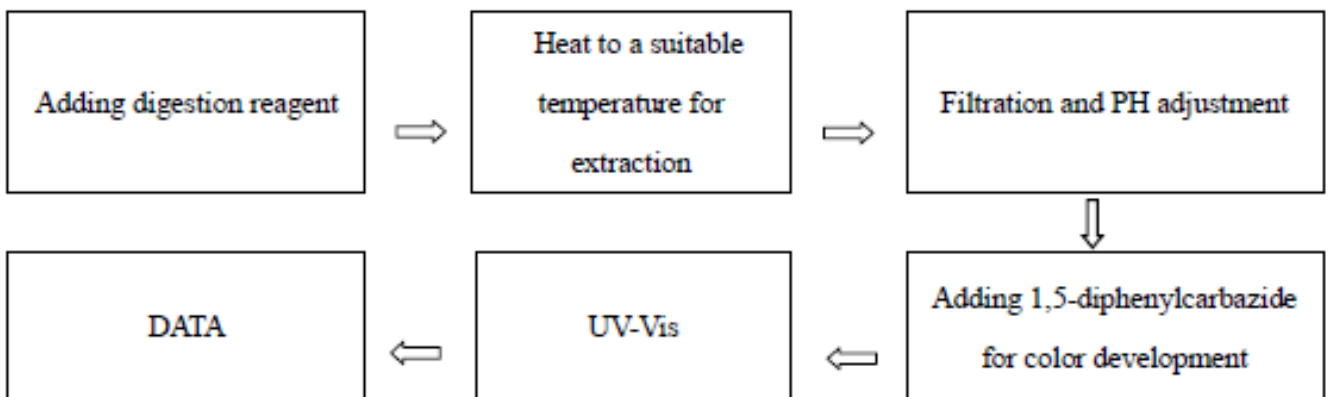
RoHS Consolidated Test Report

2. Test for Hg Content

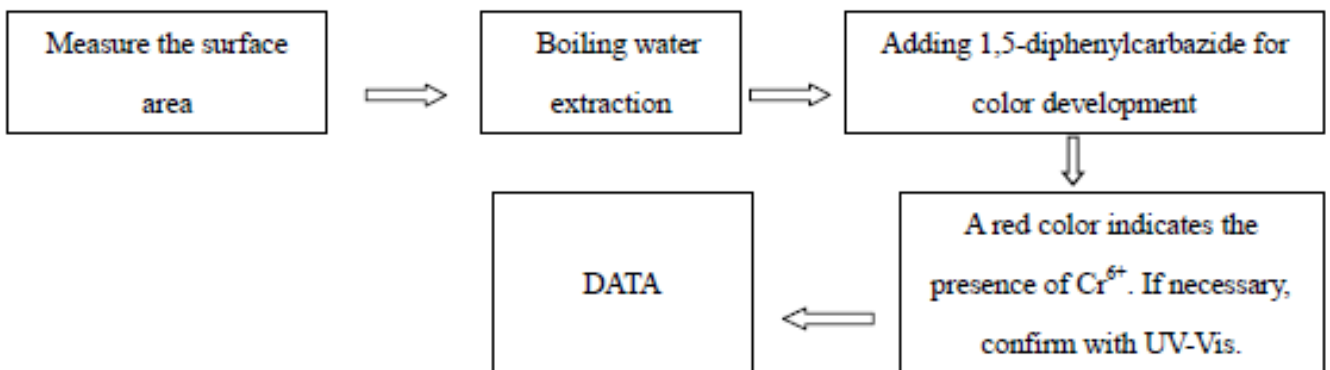


3. Test for Chromium (VI) Content

Nonmetal material

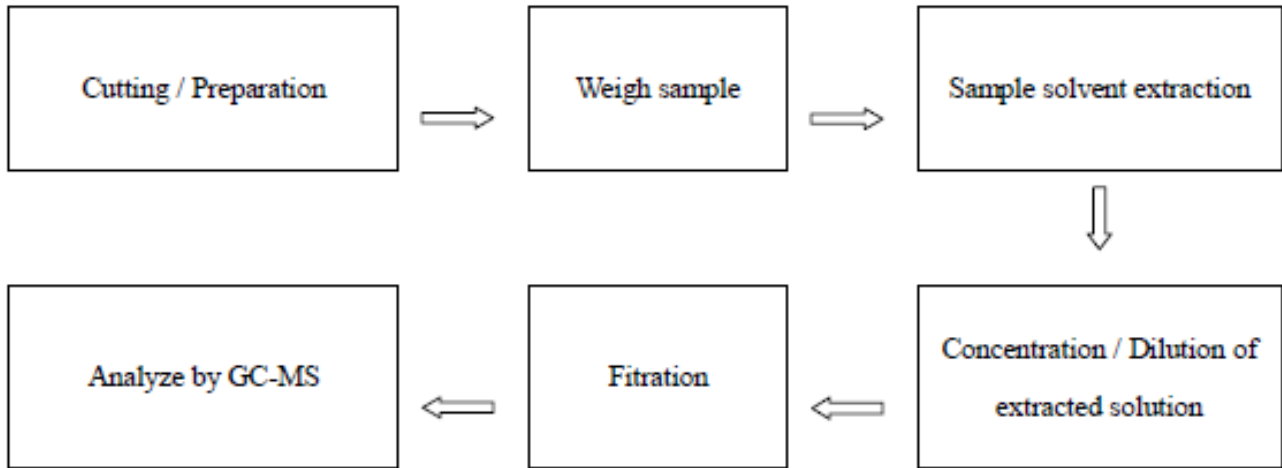


Metal material



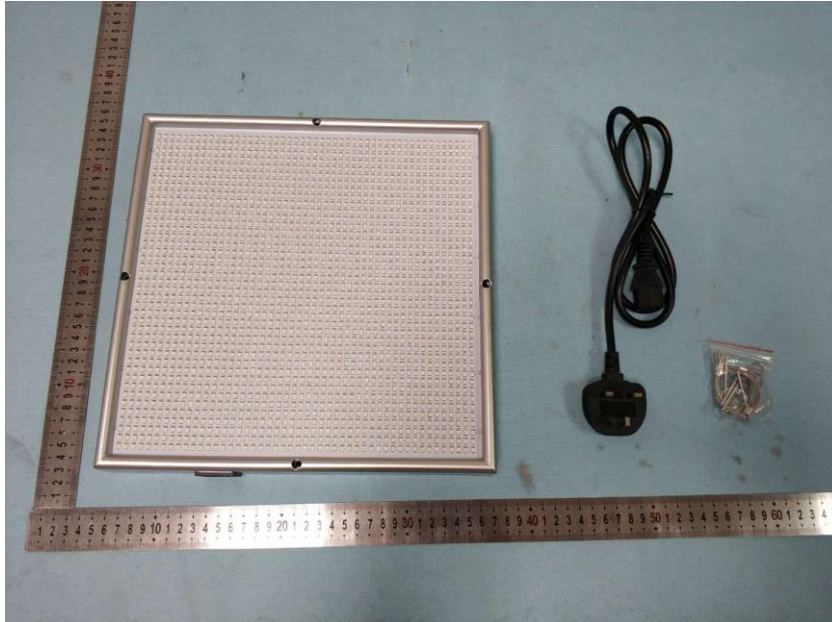
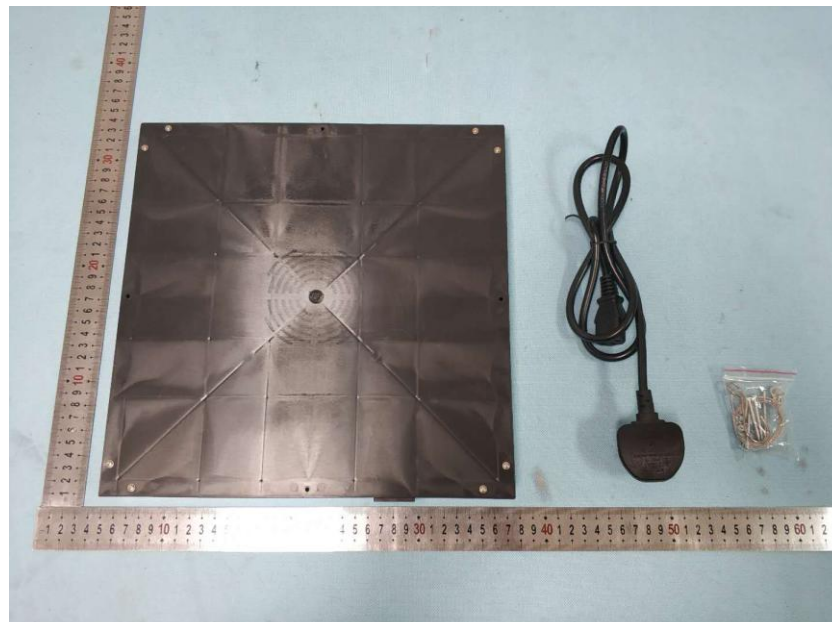
RoHS Consolidated Test Report

4. Test for DBP, BBP, DEHP, DIBP, PBB, PBDE Content

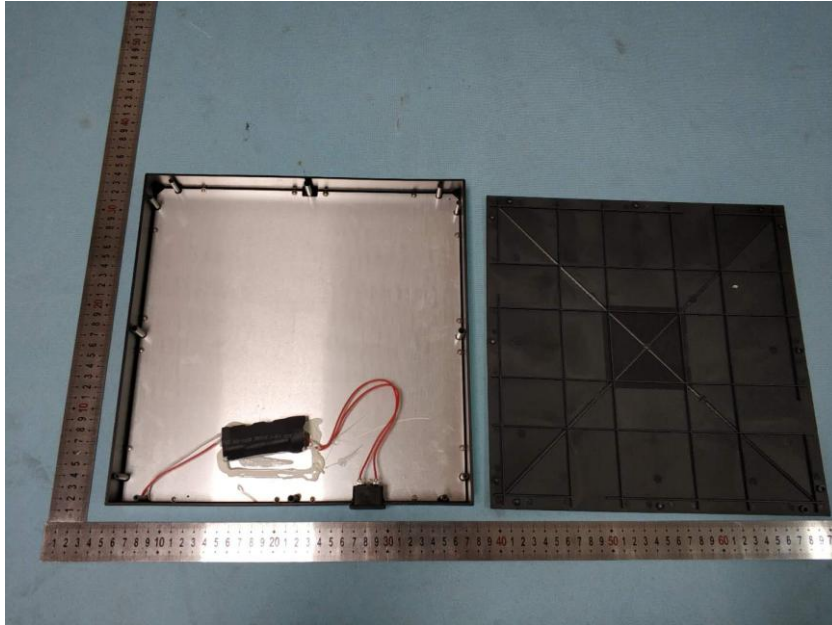


RoHS Consolidated Test Report

ANNEX A: Photo-documentation

EUT Photo 1**EUT Photo 2**

RoHS Consolidated Test Report

EUT Photo 3

***** END OF REPORT *****